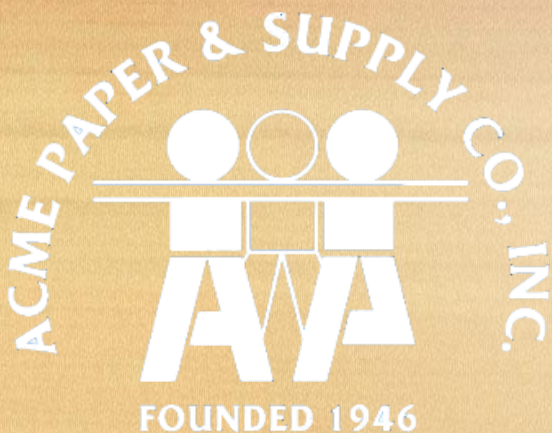


# Acme Paper & Supply Company

# CORONAVIRUS



## Back to School Product Guide







# FACEMASKS

## 3 Layer Nonwoven Kid's Face Mask:

- FDA certified

Acme Item #330594 – Blue - 1000/case

Acme Item #330595 – Pink – 1000/case



## 3 Layer Nonwoven Face Mask:

- FDA certified

Acme Item #330573 - 2000/case



## Reusable Cloth Face Mask

- 3-layer 100% cotton soft jersey
- Antimicrobial cloth controls bacterial growth and inhibits the growth of unpleasant odors
- Washable for repeat use (up to 40 washes)
- Kid's size available upon request

Acme Item #330590 - 25/pack



## KN95 Protective Face Mask:

- FDA certified

Acme Item #330580 – 100 packs of 10/case



## N95 Niosh Protective Face Mask:

- FDA certified

Acme Item #330593 – 20/packs; 400/case







# DISPOSABLE FACESHIELDS

## Anti-Fog Protective Face Shield (GOOD)

- For Single Use
- Anti-fog
- Anti-saliva splashing
- Spit guard
- Adjustable strap

\*Shields have not been tested or approved by any regulatory body. The factory does not guarantee that these shields will protect against contracting COVID-19



**Acme Item #913270 - 200/case**      **\*Drop ship only**

---

## Anti-Fog Protective Face Shield –with foam forehead pad (GOOD)

- For Single Use
- Anti-fog
- Anti-saliva splashing
- Spit guard
- Adjustable strap

\*Shields have not been tested or approved by any regulatory body. The factory does not guarantee that these shields will protect against contracting COVID-19



**Acme Item #913271 -100/case**      **\*Drop ship only**

---

**Did You Know....** New evidence shows that coronavirus can remain suspended in the air (aerosolized) for several hours under experimental conditions. There are also some initial reports of detecting viral RNA in air samples from hospital settings where COVID-19 patients were admitted. Aerosols, which are less than 5 microns in diameter, are lighter and can travel much farther than respiratory droplets. An infected person could produce aerosolized virus by talking or breathing. You could then breathe in contaminated air and become infected.





# REUSABLE FACESHIELDS

## RX Safety Face Shield with Replacement Shields (BETTER)

- Constructed from lightweight, food-grade PET with food-grade, silicone anti-fog coating
- Optically clear, distortion free viewing
- Elasticized band for a customized, secure fit
- Padded forehead strip for all-day comfort
- Fits well over eyeglasses, protective eyewear, and facial hair
- Ability to replace the visor/shield for the lowest in use cost in the industry

### Specifications

Product: Full Length Face Shield (assembled) 10" x 13"

Thickness: 16-22 mm

Weight: 96 g

Packaging: 25-pc case pack

Replaceable parts: Visor

*Latex free*

FDA Listing #10066827



**Acme Item # 913274 - \*drop ship only**

**Acme Item #913275 - Replacement Shield -\*drop ship only**

---

## Adjustable Face Shield – (BEST)

- Optically clear, distortion-free wrap-around face shield
- 1.5" foam headband holds shield away from face; floats lightly on forehead, no pressure on temples, vented for increased airflow
- Protects mask and face from direct splatter, which may prolong mask life
- Adjustable elastic headband for added strength
- Anti-fog treatment on inside & outside of shield
- Can be worn with or without glasses
- Made from super-light, recycled PET



**Acme Item #972835 - \*Drop ship only**





# CLOTHING

## Isolation Gowns

An assortment of Level 1, Level 2, Level 3 & Level 4 Isolation Gowns available upon request; offers an added layer of protection against germs.

**\*Acme Item #330588 – in stock Blue PE isolation gown performs to, but not certified as a Level 3 gown - 200/cs**



---

## Shoe Covers

Keeps dirt and dust from workspace.  
Polypropylene.  
Non-skid bottom.  
Latex-free.

Multiple sizes available.

- **Acme Item #985812 – 2000/case**







# PERSONAL PROTECTION KITS

## Office Pack

This individual package includes a KN95 face mask, 3 sets of nitrile gloves, and sanitizing wipes.

\*Acme Item #301401 – 200 kits/cs



---

## Essential Pack

This individual package includes a 3-ply face mask, 3 sets of nitrile gloves, and sanitizing wipes.

Acme Item# 301400 – 200 kits/cs



---

## Personal Sanitizer Kit

This individual package includes a 3-ply face mask, a 2oz personal size bottle of hand sanitizer, and a pair of gloves.

Acme Item# 301402 – 24 kits/cs







# THERMOMETERS

## Infrared Forehead Thermometer

### Features:

- Non-contact measurement, safer and healthier
- Measurement accuracy (human body temperature 35°C - 42°C):  $\pm 0.2^{\circ}\text{C}$  /  $0.4^{\circ}\text{F}$
- Quick temperature measurement, easy to operate
- High precision & infrared sensors, intelligent measurement
- Automatic shutdown without any operation within 30 seconds
- Suitable for children and adults

### Specifications:

Measuring distance: 3 - 5cm

LCD resolution:  $0.1^{\circ}\text{C}$  /  $0.1^{\circ}\text{F}$

Measurement range:  $32^{\circ}\text{C}$  -  $42.9^{\circ}\text{C}$  ( $89.6^{\circ}\text{F}$  -  $109.2^{\circ}\text{F}$ )

Need 2 x AAA batteries (not included)

Memory: memorize 32 measured values

Spot Distance (S/D) Ratio: 12 to 1

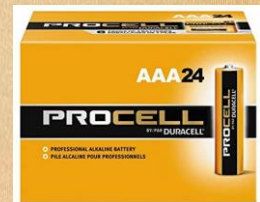


Acme Item #930987

---

## AAA Batteries

Acme Item #990098 -24/box







# INNOVATION

## Pathspot

The Pathspot hand scanner instantly detects invisible indicators of bacteria and viruses that cause illness and outbreaks.

**\*Drop Ship Only**



---

## Bioprotect

BioProtect technology is a spray-on antimicrobial protection for porous and non-porous surfaces which gives substrates an added level of protection against damaging microbes such as bacteria, mold and mildew that can cause stains, odors and product deterioration.

\*Apply with any hand-held or backpack sprayer

- **Safe water-based formula is non-flammable**
- **Provides persistent, continuous, antimicrobial protection against a broad range of microbes**
- **Non-leaching and non-migrating**
- **Prevents the mutation of adaptive microorganisms**
- **Colorless and odorless**
- **Patented, EPA registered technology**



Acme Item #511461 – 4/1 Gal

Acme Item #511462 – 5 Gal

Acme Item #511463 – 55 Gal

Acme Item #511464 – 4/1 Gal (concentrated)

Acme Item #511465 – 4/1 Gal (concentrated)

**\*Drop Ship Only**

[www.acmepaper.com](http://www.acmepaper.com)

**... Much More Than Paper**



# DISINFECTANTS

## Protexus Electrostatic Sprayers

Evaclean's cutting-edge, battery-powered electrostatic sprayers provide a whole new way to attack the problem. A 'game-changing' approach that arms every technician with powerful tools and technology to protect your facility with 360 degrees of electrostatic spraying coverage, while saving time and money.



### Options include:

Acme Item #567155 - Cordless handheld

Acme Item #567156 - Backpack configuration

\*Currently taking orders for delivery in September



## PurTabs for Protexus Sprayers

PUR TABS Disinfecting and Sanitizing Tablets dissolve in the tank to create up to **6 different solutions** that range from: **Killing C Diff in 4 minutes to NSF D2 registered food contact surface sanitizing.**

### Options include:

Acme Item #511655 - 334 mg -12/100ct

Acme Item #511654 - 3.3 g – 6/200ct

Acme Item #511656 - 13.1 g – 2/256ct







# DISINFECTANTS

## TruShot 2.0 Disinfectant Cleaner

A fast and effective one-step spray and wipe virucide and disinfectant. Effective against a broad spectrum of bacteria, viruses, fungi and inhibits the growth of mold and mildew.

For virtually any hard, non-porous surfaces such as countertops, stainless steel, sinks, toilets, tubs, doorknobs, floors, walls and garbage cans.

TruShot® Cartridges require no user mixing. The color-coded and easy-to-read cartridges simplify compliance, reduce off-label usage, and deliver the comparable clean of up to 11 in-use quarts.

COVID-19 dwell time -3 minutes

Acme Item #511849 -Trigger Dispenser– Each

Acme Item #511850 – Multi-surface Disinfectant - 4/case

Acme Item #511848 – Glass, Multi-surface Cleaner – 4/case

Acme Item #511847 – Restroom, Hard Surface Cleaner – 4/case



---

## MAXIM Facility +

This product is a one-step hospital –use germicidal cleaner and deodorant designed for general cleaning, disinfecting, and controlling mold and mildew odors on hard, non-porous surfaces.

- Contains hydrogen peroxide
- Effective against Staph, E-coli, and Salmonella enterica
- Tough on germs, easy on surfaces
- COVID-19 dwell time – 1 minute

Acme Item # 514620 – 4/1 Gallon







# DISINFECTANTS

## Fight-Bac Ready to Use Disinfectant

This quaternary based, anti-bacterial cleaner is an ideal disinfectant for use in hospitals, nursing homes, schools and hotels.

- Meets requirements of OSHA Bloodborne Pathogen Standard
- COVID-19 dwell time – 10 minutes

**Acme Item #566311 - 12/case**

---



## Diamond Disinfectant 1000

Designed specifically for hospitals, food processing plants, dairies, restaurants, bars, and other institutions here disinfection and sanitization is of prime importance.

### Dilution Rates

- Sanitization of glassware, pots, etc: Add 1 oz per 4 gallons of water. No potable rinse required.
- General Disinfection: Add 3 ounces per 5 gallons of water.
- Hospital Disinfection: Add 3.5 ounces per 5 gallons of water.
- COVID-19 dwell time – 10 minutes

**Acme Item # 513562 – 4/1 Gallon**

---







# WIPER BUCKET

## Multi-Task Wiping System

An Easy to Use Wiping System for Every Environment

- Convenient and easy to use bucket with dispensing lid.
- Use with a variety of disinfecting solutions.
- Enclosed lid system to reduce the risk of cross contamination.
- More efficient than cotton rags or microfiber cloths.
- Strong, 100% synthetic material that holds and manages the right amount of chemical solution.
- Rolls Sold Separately.

**Acme Item #457462 – Multi-task bucket; 4 buckets / case**

**Acme Item #457450 – Multi-task Wipes -6/100 per case**



### DID YOU KNOW...

#### Two-Step Cleaning and Dwell Times

For maximum effectiveness, we recommend using the two-step cleaning process to help prevent the spread of disease-causing pathogens.

**Step one:** Clean and remove unwanted soils from surfaces using a cleaning solution with a microfiber. This will help to remove potential microbial harborage areas.

**Step two:** Apply a disinfecting solution to surfaces while adhering to the manufacturer recommendations for dilution, safety, and dwell time. Finally, after waiting for the recommended dwell time, remove the solution with a wet/dry vacuum or microfiber.





# SURFACE SANITIZER

## Diamond Ready To Use (RTU) Sanitizer

No-rinse surface sanitizer for Institutional and Industrial Use:

- Schools
- Dairies
- Restaurants
- Food Handling and Process Areas
- Federally Inspected Meat & Poultry Plants
- Bars and Institutional Kitchens

Acme Item #512180 -12/32oz

---







# HAND SANITIZER

## Fresh Gel Hand Sanitizer Packets

Quick, portable, convenient pouches that are easy to use anywhere! Each pouch contains 65% alcohol.

Acme Item #511384 - 400 pouches per case



## Hand Sanitizer Wipes

Sanitizing Handwipe Towelette

Acme Item #453500 – 10 packs of 100; 1000 per case



## Gel Hand Sanitizer

- 70% Alcohol
- Pumps included

Acme Item #511806 –Gallon -4/case



## HAND SANITIZER GEL PUMP

75% alcohol

Acme Item# 511593 - 24/8.5OZ



## HAND SANITIZER GEL PUMP

75% alcohol

Acme Item# 511594 - 12/16.9oz





# HAND SANITIZER STANDS

## Aluminum Sanitizer Dispenser Stand

- Accepts dispensers up to 7" diameter with less than 2" diameter throat.
- 11" x 11" base. Footprint minimizes space required.
- Support mechanism stabilizes dispenser container and prevents it from being knocked off the stand or easily stolen.
- All Aluminum construction

**Acme Item #972844 – 24" tall - each**

**Acme Item #972936 -36" tall - each**



## Wall Mount Touchless Dispenser

Equipped with a site window so you can easily monitor the level when refill is needed. Dispenser is equipped with lock and key.

- 12 Dispensers per case
- Requires (4) Size C Batteries (not included)

**Acme Item #530129**



## Floor Stand Touchless Dispenser

Floor stand for use with PURELL® LTX™ or TFX™ dispensers.

- Freestanding design
- Ideal for high-traffic areas
- Makes PURELL® Instant Hand Sanitizer available anywhere

**Acme Item #985980**





# FACILITY ITEMS-SIGNAGE

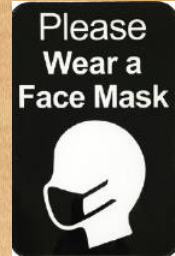
## Social Distance & Other Safety Compliance Signs

Help maintain social distance and meet local safety standards and requirements with Social Compliance Signs.

- Bold 6x9" signs are easy to read
- Self adhesive back for easy hanging/placement

\*Special Order – 5 day Lead Time

\*Available via Drop Ship



## Social Distance Floor Signs with Non-Slip Surface

- 6"x12" Red (Box of 6)
- 11 3/4" Diameter, Red (Box of 6)
- 11 3/4" Diameter, White (Box of 6)







# FACILITY ITEMS

## Touchless Restrooms

Further reduce the spread of germs in your restrooms by eliminating the need to touch certain “germ hot spots”.



Automated washroom solutions from Rubbermaid Commercial, are the most employee and customer -friendly ways to maintain a cleaner environment and prevent the spread of germs.



We offer:

AutoFaucet –Automatic Faucet

AutoClean – Automatic Cleaning System

TCell – Passive Air Care System

AutoFlush- Automatic Flushing System

---

## Hands Free Door Openers

Minimize the chance of spreading germs from potentially contaminated door handles.

- Stainless-steel construction for lasting strength and appearance, even in high-traffic applications.
- Versatile – can be placed almost anywhere.
- Easy to install; hardware included.



**Acme Item #939811 – Forearm Unit – each**

**Acme Item# 939813 – Foot Unit - each**

---

## Mobile Handwashing Stations

This is a portable, self-contained, electric hand washing system that will run hot and cold water for up to 70 hand washings. The unit includes double stainless-steel sinks, two each 5 gallon fresh water tanks, two each 7 1/2 gallon waste water bins, hand soap dispenser, and paper roll holder. Use with a 110V electrical source.



\*Available via drop ship only



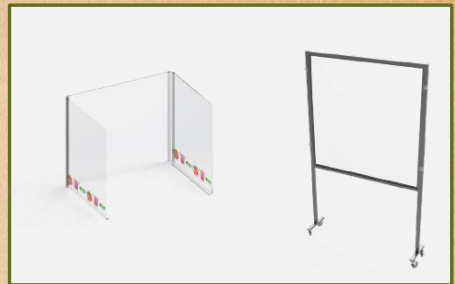
# FACILITY ITEMS

## Acrylic Barriers

Clear, acrylic shields offers an aesthetically pleasing barrier to provide more protection for your staff and students.

\*Available for Drop Ship

\*\*48 hour turnaround from time of order



## Printed Social Distancing Floor Tape

- Great for temporary indoor floor marking
- Removes cleanly from most flooring surfaces up to 60 days
- Repeated "STAND HERE" perfect for social distancing applications
- Tears easily by hand for simple application
- Premium grade, medium adhesion, UV-resistant
- Not recommended for hardwood floors



Acme Item #520002 ; 2in x 60yards

## PPE Disposal Receptacles

Equip your facility with Utility and Decorative Refuse containers with a dedicated PPE (personal protective equipment) waste stream to help students and staff effectively dispose of masks and gloves.







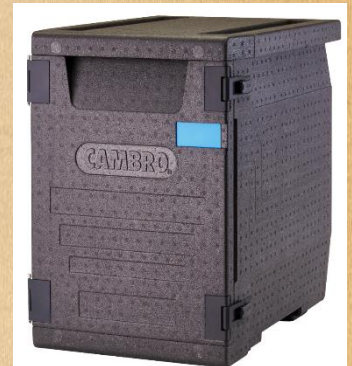
# FOODSERVICE

## CAFETERIA OPERATIONS

School systems that are offering in-person learning for students, must contend with how to safely facilitate school meal programs for those students during the day. Below are some options to consider.

### Insulated Coolers / Carriers

Insulated carriers are perfect to transport food containers and drinks from the cafeteria to the classroom.



### Pizza Containers

Various options are available for packaging pizza slices.

Paper Pizza Clamshell; Red/Green  
**Acme Item #440585 - 220/case**

9in Kraft Personal Size Pizza Box  
**Acme Item #350007 - 150/case**





# FOODSERVICE

## FOOD CONTAINERS

3 COMPARTMENT BLACK HINGED CLAMSHELL  
**Item #901610-100/CS**



1 COMPARTMENT HINGED CLAMSHELL 6x6  
**Item #323131**

1 COMPARTMENT CLAMSHELL 9x9  
**Item #323124**

1 COMPARTMENT 9x9 HINGED CONTAINER  
**Item #323138**



3 COMPARTMENT HINGED 9x9 CONTAINER  
**Item #323142**

3 COMPARTMENT BLACK  
**Item #323122**

---

## CUTLERY KITS

MEDIUM WEIGHT POLYPROPYLENE KIT  
(FORK, 8X10 NAPKIN)  
**Item #130214 - 1M/CS**



HEAVY WEIGHT POLYPROLYENE KIT - BLACK  
(Fork ,Knife, Napkin)  
**Item #132296 - 250/CS**

HEAVY WEIGHT POLYSTYRENE CUTLERY KIT - BLACK  
(Fork, Knife, Teaspoon, Napkin)  
**Item #130476 - 250/CS**







# FOODSERVICE

## FOOD TRAYS

White Food Tray, holds hot or cold foods. Rectangular, single-use trays are made from premium solid bleached sulfate board. Ideal for serving snacks and side items.

**Various sizes available.**



1000/case



---

## FOOD TRAY SLEEVES

Paperboard food tray sleeve covers and protects the contents of filled rectangular food trays. The sleeve allows for trays to be easily transported or stacked when full. Made from clay-coated kraft paperboard, the coating helps protect against moisture.



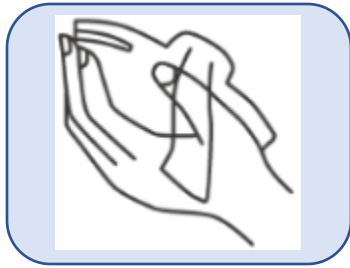
- Single Use
- Microwaveable for reheat
- Recyclable
- 250/case

\*Special Order Only



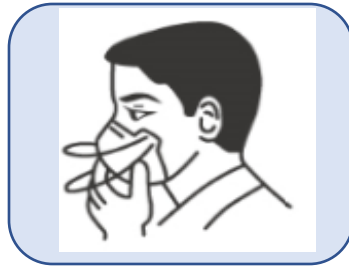
# HOW TO PROPERLY WEAR A FACE MASK

## WEARING THE FACE MASK



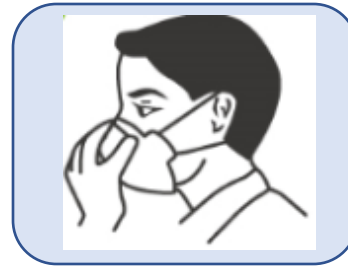
1

Clean your hands with soap and water or hand sanitizer, then remove a mask from the box. Make sure there are no obvious tears or holes in either side of the mask.



2

Keep the white side towards your face with the nose clip, or stiff bendable edge at the top.



3

Hold the mask by the ear loops and place a loop around each ear.

*\*\*See below if your mask has ties or bands.*



4

Press the nose clip to the shape of your nose and pull the bottom of the mask over your mouth and chin.

- Face masks with ties - Bring the mask to your nose level and place the ties over the crown of your head and secure with a bow.
- Face Mask with Bands - Hold the mask in your hand with the nosepiece or top of the mask at fingertips, allowing the headbands to hang freely below hands. Bring the mask to your nose level and pull the top strap over your head so that it rests over the crown of your head. Pull the bottom strap over your head so that it rests at the nape of your neck.

## REMOVING THE FACE MASK

- Clean your hands with soap and water or hand sanitizer before touching the mask. Avoid touching the front of the mask to avoid contamination. Only touch the ear loops/ties/band.
- Follow the instructions below for the type of mask you are using
  - Face Mask with Ear loops: Hold both of the ear loops and gently lift and remove the mask.
  - Face Mask with Ties: Untie the bottom bow first then untie the top bow and pull the mask away from you as the ties are loosened.
  - Face Mask with Bands: Lift the bottom strap over your head first then pull the top strap over your head.
- Throw the mask in the trash. Clean your hands with soap and water or hand sanitizer.



# HAND HYGIENE REGIMEN FOR HANDWASHING

1



Wet hands under warm running water. Leave water running.

2



Dispense soap.

3



Rub hands palm to palm.

4



Rub right palm over top of left hand with interlaced fingers. Repeat with left palm over top of right hand.

5



Rub palms together with fingers interlaced.

6



Rub backs of fingers to opposing palms with fingers interlocked.

7



Rotate rubbing the left thumb clasped in the right palm. Repeat with right thumb clasped in the left palm.

8



Rotate rubbing, backwards and forwards with clasped fingers of your right hand in your left palm. Repeat with left hand in right palm.

9



Rinse hands thoroughly with running water.

10



Dry with clean paper towels. Turn water off using a towel. The total process should take approximately 40-60 seconds.





# HAND HYGIENE REGIMEN FOR SANITIZING

1



Place enough product in your palm to thoroughly cover your hands.

2



Rub hands palm to palm.

3



Rub right palm over top of left hand with interlaced fingers. Repeat with left palm over top of right hand.

4



Rub palms together with fingers interlaced.

5



Rub backs of fingers to opposing palms with fingers interlocked.

6



Rotate rubbing the left thumb clapsed in the right palm. Repeat with right thumb clapsed in the left palm.

7



Rotate rubbing backwards and forwards with clapsed fingers of your right hand in your left palm. Repeat with fingers of your left hand in your right palm.

8



The total process should take approximately 20 seconds. Once your hands are dry they are safe for caring for patients.

